



PROGUARD APRONS

Protech Medical has some of the most professional sewing staff in the industry. This enables us to tailor aprons according to your needs and innovate new and improved designs that suit you.

Quality and customization have played major rolls in our company's success. Fulfilling our commitment to high quality, Protech's aprons are CE Marked and made in the USA. We also follow the strict guidelines of ISO from our notified body.

Our radiation protective material, like our aprons, is made in America. We now offer 4 light-weight vinyl materials that are made with the highest quality and most advanced techniques available.

Apron Sizing & Measurements:

- Refer to pages 30 and 31 for sizing information.

Apron Color Options:

- Refer to pages 27-29 for apron colors



Aprons made with standard 0.50mm Lead Equivalent protection.



Custom sizing and apron configurations are our specialty.



Made in the USA



CORE PROTECTION

STANDARD LEAD



Created with emulsion polymers and the purest form of lead particles and stabilizers. Our standard lead option is the heaviest of the four core materials we offer. Though heavy, pure lead vinyl is also the most affordable and consistently provides protection over a wide range of kVp.

LIGHTWEIGHT LEAD



Created with emulsion polymers and a carefully blended mix of stabilizers and high quality metals. Over 10% lighter than standard lead, our light-weight lead provides protection equal to traditional lead aprons while providing excellent back relief.

LEAD FREE



Created with emulsion polymers and the purest ingredients of Antimony and stabilizers. Our lead-free material is the industry leader in light-weight protection. It is 22% lighter than lead and 12% lighter than light-weight lead. Environmentally safe, our lead free material can be disposed of through normal waste protocols and is excellent for long procedures.

PREMIER



Created with emulsion polymers and high quality lead-free metals: Antimony and Tungsten blended with trade secret stabilizers. Premier was designed with over 40 years of experience using patented core material technology. It is 10% lighter than our lead-free core material while providing advanced x-ray protection during prolonged procedures.

	STANDARD LEAD	LIGHTWEIGHT LEAD (T-lite)	LEAD FREE (Supreme)	PREMIER
COST	\$	\$\$	\$\$\$	\$\$\$\$
WEIGHT	IIII	III	II	I
DISPOSAL				
AVAILABLE THICKNESS	.25, .50, .75	.175, .25, .35, .50, .75	.175, .25, .35, .50, .75	.175, .25, .35, .50, .75
COMMON THICKNESSES	.25, .50	.35	.50	.50
CERTIFICATIONS	ASTM, IEC, CE	ASTM, IEC, CE	ASTM, IEC, CE	ASTM

ATTENUATION INFO

All of our core materials are tested at various kVp ranges and in accordance with ASTM guidelines and European IEC regulations. Protech tests its materials annually and always has the test results on hand to be sent to you at your request.

Protech's vinyl based core materials are the most light-weight materials in the industry. Our lead materials are available to ship worldwide in a variety of thicknesses and quantities.





Customizing Aprons

Are you tired of your apron “disappearing”? How about trying to locate it in another department or room? Protech’s highly trained embroidery and logo team can help you. Our embroidery and logos are done in-house with modern monogram machines and the latest in digitization technology.

Before you order embroidery, please review the following guidelines below!

A common request for embroidery is your name on the first line and department on the second line located above the pocket.

Embroidery or monogram is limited to *22 characters* per line including punctuation and spaces. Our embroidery comes in **UPPER CASE** or Upper/Lower as well a variety of font sizes and styles.

Logos are typically placed on the pocket but, along with embroidery, can be placed in most areas of the apron. Before creating your logo we must first digitize it. After digitization, your logo will be saved for future use.

LuXray Patterns

The LuXray Brand offers patterned accents on the apron’s sides and shoulders combined with an optional matching design on your thyroid collar. The LuXray design is available through any style of apron. Simply choose the colors for the accents and apron as well as your size and you are on your way to joining a revolution in apron design innovation.



OUR SERVICES

Rental Aprons

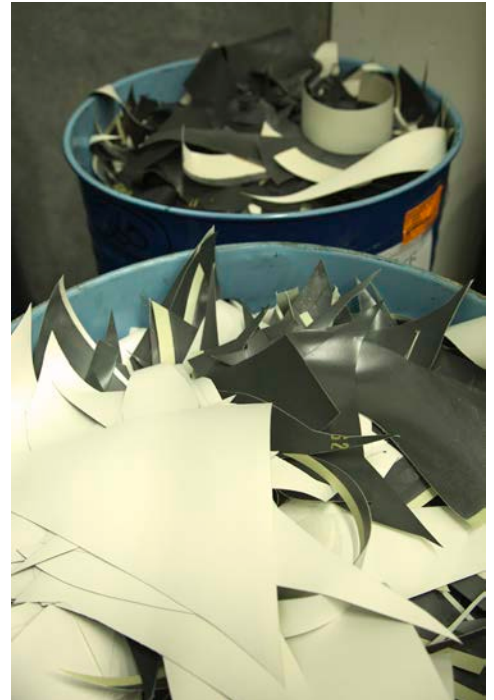
Rental aprons are essential for certificate courses, cadaver workshops, or any other event that requires the use of thorough and radiation protective apparel. There is no need to purchase and hold all of that inventory. Protech has a large selection, in stock, and available to ship for you today.

Lead Disposal

Lead aprons must be disposed of carefully. Protech provides an in-house replacement service for this very occasion. Our disposal service is free with the purchase of any new apron! There are always additional offers available so feel free to call and get hassle free disposal of your lead, today.

Sponsorships | Charity

Protech sponsors educational events worldwide. We are currently working with partners in Africa and other countries to donate new and used aprons.



Warranty

Protech guarantees the quality and workmanship of its aprons for two years against manufacturer defects. We value your business and stand behind our products. If you are in need of help it will be our pleasure to work with you.

Storage

When not in use, garments should be placed on a hanger or stored using Protech's apron storage equipment. Avoid contact with hot surfaces or exposure to direct sunlight. Also avoid contact with sharp objects, as these may damage the garment's protective core material. For transportation, the garments should be carefully rolled up, not folded, and placed into a box.



Cleaning



Clean most dirt and stains (blood, bodily fluids, barium contrast media) using designated apron cleaning solutions or mild household soaps in diluted form. To apply cleaning fluid, please use a cloth or wipe and always use cold water.



Please do not machine wash or dry. Do not use hot or warm water. Do not iron or autoclave.

- Back Relief Apron -

Frontal Apron

Premium



Model:	AP-BR
CE Marked:	Yes
Front Core Thickness:	0.50mm Lead Equivalence (LE)
Core Material Options:	Lead (ST), Light Lead (LW), Lead-Free (LF), Premier (PR)
Core Material Thickness:	0.50, 0.35, or 0.25 LE
Closure:	Velcro & Buckle
Fabric Options:	Nylon, Ripstop, Designer, Vinyl
Sizes:	XS to 4XL (Sizing Chart on page 31)
Customizations:	Embroidery & Logo
Add-ons:	Thyroid Collar, Sleeve, Surgical Drop

Available Colors: Refer to pages 27-29.



Our Back Relief aprons provide comfort while maintaining maximum radiation protection. They are designed to transfer the weight of the apron from the shoulders to the hips. The back relief apron features a unique padded belt system constructed with a bonded elasticized panel that will not lose its shape. It provides increased comfort and back support throughout the life of the apron. This apron also comes standard with thick shoulder pads and a chest pocket.

- Buckle Apron -

Frontal Apron

Standard



Model:	AP-BA
CE Marked:	Yes
Front Core Thickness:	0.50mm Lead Equivalence (LE)
Core Material Options:	Lead (ST), Light Lead (LW), Lead-Free (LF), Premier (PR)
Core Material Thickness:	0.50, 0.35, or 0.25 LE
Closure:	Buckle
Fabric Options:	Nylon, Ripstop, Designer, Vinyl
Sizes:	XS to 4XL (Sizing Chart on page 31)
Customizations:	Embroidery & Logo
Add-ons:	Thyroid Collar, Sleeve, Surgical Drop

Available Colors: Refer to pages 27-29.



The Buckle Apron comes standard with a quick release belt allowing quick disposal of the apron. The belt is adjustable to accommodate different sizes. The shoulder straps cross in the back to provide a comfortable and secure fit.

- Flexback Apron -

Frontal Apron

Premium



Available Colors: Refer to pages 27-29.

Model:	AP-FB
CE Marked:	Yes
Front Core Thickness:	0.50mm Lead Equivalence (LE)
Core Material Options:	Lead (ST), Light Lead (LW), Lead-Free (LF), Premier (PR)
Core Material Thickness:	0.50, 0.35, or 0.25 LE
Closure:	Velcro
Fabric Options:	Nylon, Ripstop, Designer, Vinyl
Sizes:	XS to 4XL (Sizing Chart on page 31)
Customizations:	Embroidery & Logo
Add-ons:	Thyroid Collar, Sleeve, Surgical Drop



The Flexback apron provides maximum comfort with its excellent weight distribution. It is the flagship of our front protection apron line-up and we highly recommend it. The cross back straps are specially designed to take the burden off your shoulders and support your lower back. A velcro backstrap (not shown here) is also included.

- Surgical Drop Apron -

Frontal Apron

Standard



Available Colors: Refer to pages 27-29.

Model:	AP-SD
CE Marked:	Yes
Front Core Thickness:	0.50mm Lead Equivalence (LE)
Core Material Options:	Lead (ST), Light Lead (LW), Lead-Free (LF), Premier (PR)
Core Material Thickness:	0.50, 0.35, or 0.25 LE
Closure:	Velcro
Fabric Options:	Nylon, Ripstop, Designer, Vinyl
Sizes:	XS to 4XL (Sizing Chart on page 31)
Customizations:	Embroidery & Logo
Add-ons:	Thyroid Collar, Sleeve, Surgical Drop



The Surgical Drop Apron is designed for quick release when you are trying to maintain your sterile field. With extra thick shoulder pads, the surgical drop apron provides maximum comfort for all users. Standard features include hanging straps and velcro closures.

- Tie Apron -

Frontal Apron

Economy



Available Colors: Refer to pages 27-29.

Model:	AP-TIE
CE Marked:	Yes
Front Core Thickness:	0.50mm Lead Equivalence (LE)
Core Material Options:	Lead (ST), Light Lead (LW), Lead-Free (LF), Premier (PR)
Core Material Thickness:	0.50, 0.35, or 0.25 LE
Closure:	Tie
Fabric Options:	Nylon, Ripstop, Designer, Vinyl
Sizes:	XS to 4XL (Sizing Chart on page 31)
Customizations:	Embroidery & Logo
Add-ons:	Thyroid Collar, Sleeve, Surgical Drop



The Tie Apron is our easy to use economy model. Due to its use of minimal materials, the tie apron is our lightest weight apron.

- Velcro Adjustable Apron -

Frontal Apron

Standard



Available Colors: Refer to pages 27-29.

Model:	AP-VA
CE Marked:	Yes
Front Core Thickness:	0.50mm Lead Equivalence (LE)
Core Material Options:	Lead (ST), Light Lead (LW), Lead-Free (LF), Premier (PR)
Core Material Thickness:	0.50, 0.35, or 0.25 LE
Closure:	Velcro
Fabric Options:	Nylon, Ripstop, Designer, Vinyl
Sizes:	XS to 4XL (Sizing Chart on page 31)
Customizations:	Embroidery & Logo
Add-ons:	Thyroid Collar, Sleeve, Surgical Drop



The velcro adjustable apron's back flaps make this apron user friendly by allowing enhanced adjustability. Crisscrossing back straps keep the shoulders from slipping off while velcro tabs make adjustability quick and easy. The velcro adjustable apron features extra thick shoulder pads and a velcro closure.

- Urology Apron -

Frontal Apron

Premium

Available Colors: Refer to pages 27-29.

Model:	AP-UA
CE Marked:	No
Front Core Thickness:	0.50mm Lead Equivalence (LE)
Core Material Options:	Lead (ST), Light Lead (LW), Lead-Free (LF), Premier (PR)
Core Material Thickness:	0.50, 0.35, or 0.25 LE
Closure:	Velcro
Fabric Options:	Nylon, Ripstop, Designer, Vinyl
Sizes:	XS to 4XL (Sizing Chart on page 31)
Customizations:	Embroidery & Logo
Add-ons:	Thyroid Collar, Sleeve, Surgical Drop

Image Coming Soon

The urology apron features three panels at the bottom of the apron which enable the user to sit comfortably while maintaining maximum coverage from x-ray.

- Tri-Tab Vest Skirt Apron -

Full Protection Apron

Premium

Available Colors: Refer to pages 27-29.

Model:	AP-TVS
CE Marked:	No
Front Core Thickness:	0.50mm Lead Equivalence (LE)
Core Material Options:	Lead (ST), Light Lead (LW), Lead-Free (LF), Premier (PR)
Core Material Thickness:	0.50, 0.35, or 0.25 LE
Closure:	Velcro
Fabric Options:	Nylon, Ripstop, Designer, Vinyl
Sizes:	XS to 4XL (Sizing Chart on page 31)
Customizations:	Embroidery & Logo
Add-ons:	Thyroid Collar, Sleeve, Surgical Drop

Image Coming Soon

The tri-tab vest skirt apron features velcro closures at the shoulder and around the hips. The closures allow an easy-on, easy-off function while providing premium comfort.

- Vest Skirt Apron -

Full Protection Apron

Standard



Model: AP-VS

CE Marked: Yes

Front Core Thickness: 0.50mm Lead Equivalence (LE)

Back Core Thickness: 0.25mm Lead Equivalence (LE)

Core Material Options: Lead (ST), Light Lead (LW), Lead-Free (LF), Premier (PR)

Core Material Thickness: 0.50, 0.35, or 0.25 LE

Closure: Velcro & Buckle

Fabric Options: Nylon, Ripstop, Designer, Vinyl

Sizes: XS to 4XL

(Sizing Chart on page 31)

Customizations: Embroidery & Logo

Add-ons: Thyroid Collar, Sleeve, Surgical Drop

Available Colors: Refer to pages 27-29.



The Vest-Skirt apron is our most popular full protection model. The two piece design shifts 70% of the weight directly to the hips, reducing back fatigue which is great for prolonged procedures. The vest features two 0.50mm Pb panels that create a 1.0mm overlap and a no-slip, quick release belt for added support.

- Vest Skirt Overlap Apron -

Full Protection Apron

Standard



Model: AP-VSFO

CE Marked: Yes

Front Core Thickness: 0.50mm Lead Equivalence (LE)

Back Core Thickness: 0.25mm Lead Equivalence (LE)

Core Material Options: Lead (ST), Light Lead (LW), Lead-Free (LF), Premier (PR)

Core Material Thickness: 0.50, 0.35, or 0.25 LE

Closure: Velcro & Buckle

Fabric Options: Nylon, Ripstop, Designer, Vinyl

Sizes: XS to 4XL

(Sizing Chart on page 31)

Customizations: Embroidery & Logo

Add-ons: Thyroid Collar, Sleeve, Surgical Drop

Available Colors: Refer to pages 27-29.



The Vest-Skirt combination with full overlap provides larger front panels covering the entire chest. Each front panel has 0.25mm Pb to provide the 0.50mm Pb protection required when engaged which results in a lighter weight than your traditional vest and skirt apron. The two piece design shifts 70% of the weight directly to the hips, also reducing back fatigue. The skirt features a non-slip, quick release belt for added support. Double padded shoulders offer maximum comfort.

- Vest Skirt Flexback Apron -

Full Protection Apron

Premium



Available Colors: Refer to pages 27-29.

Model:	AP-VSFB
CE Marked:	Yes
Front Core Thickness:	0.50mm Lead Equivalence (LE)
Back Core Thickness:	0.25mm Lead Equivalence (LE)
Core Material Options:	Lead (ST), Light Lead (LW), Lead-Free (LF), Premier (PR)
Core Material Thickness:	0.50, 0.35, or 0.25 LE
Closure:	Velcro & Buckle
Fabric Options:	Nylon, Ripstop, Designer, Vinyl
Sizes:	XS to 4XL (Sizing Chart on page 31)
Customizations:	Embroidery & Logo
Add-ons:	Thyroid Collar, Sleeve, Surgical Drop



This Vest-Skirt flexback combines the benefits of a 2-piece vest/ skirt apron with the added elasticized support of the flexback apron; You control the amount of back support by adjusting the inner elasticized quick release belt. Each front panel of the vest has 0.50mm Pb, with a total of 1.0mm Pb on the overlap. Like the Vest-Skirt combo, the two piece design shifts 70% of the weight directly to the hips, reducing back fatigue. The skirt features a non-slip, quick release belt for added support.

- Vest Skirt Flexback Overlap -

Full Protection Apron

Premium



Available Colors: Refer to pages 27-29.

Model:	AP-VSFBFO
CE Marked:	Yes
Front Core Thickness:	0.50mm Lead Equivalence (LE)
Back Core Thickness:	0.25mm Lead Equivalence (LE)
Core Material Options:	Lead (ST), Light Lead (LW), Lead-Free (LF), Premier (PR)
Core Material Thickness:	0.50, 0.35, or 0.25 LE
Closure:	Velcro
Fabric Options:	Nylon, Ripstop, Designer, Vinyl
Sizes:	XS to 4XL (Sizing Chart on page 31)
Customizations:	Embroidery & Logo
Add-ons:	Thyroid Collar, Sleeve, Surgical Drop



This Vest-Skirt flexback combines the benefits of a 2-piece vest/ skirt apron with the added elasticized support like on the flexback apron. You control the amount of back support by adjusting the inner elasticized quick release belt. Each front panel has 0.25mm Pb to provide 0.50mm Pb on the full overlap. Like the Vest-Skirt, the two piece design shifts 70% of the weight directly to the hips, reducing back fatigue. The skirt features a non-slip, quick release belt for added support.

- Wrap Around Back Relief -

Full Protection Apron

Standard



Model: AP-WABR

CE Marked: Yes

Front Core Thickness: 0.50mm Lead Equivalence (LE)

Back Core Thickness: 0.25mm Lead Equivalence (LE)

Core Material Options: Lead (ST), Light Lead (LW), Lead-Free (LF), Premier (PR)

Core Material Thickness: 0.50, 0.35, or 0.25 LE

Closure: Velcro & Buckle

Fabric Options: Nylon, Ripstop, Designer, Vinyl

Sizes: XS to 4XL

(Sizing Chart on page 31)

Customizations: Embroidery & Logo

Add-ons: Thyroid Collar, Sleeve, Surgical Drop

Available Colors: Refer to pages 27-29.



Offering full protection, this back relief design transfers the weight from the shoulders to the hips with the aid of a 6" bonded elastic belt. (See features of our Back Relief belt.) This apron features velcro and buckle closures, as well as a velcro break-away side seam for freedom of movement. Double padded shoulders offer added comfort.

- Wrap Around Full Overlap -

Full Protection Apron

Standard

Model: AP-WAFO

CE Marked: No

Front Core Thickness: 0.50mm Lead Equivalence (LE)

Back Core Thickness: 0.25mm Lead Equivalence (LE)

Core Material Options: Lead (ST), Light Lead (LW), Lead-Free (LF), Premier (PR)

Core Material Thickness: 0.50, 0.35, or 0.25 LE

Closure: Tie & Buckle

Fabric Options: Nylon, Ripstop, Designer, Vinyl

Sizes: XS to 4XL

(Sizing Chart on page 31)

Customizations: Embroidery & Logo

Add-ons: Thyroid Collar, Sleeve, Surgical Drop

Available Colors: Refer to pages 27-29.

Image Coming Soon

Provides excellent back support with a 6" bonded elastic belt. The wrap-around full overlap apron eliminates redundant fabric and lead; reducing unnecessary weight and increasing comfort. The two large front panels each contain 0.25m LE totalling 0.50mm LE when engaged.

- Wrap Around Flexback -

Full Protection Apron

Premium

Model:	AP-WAFB
CE Marked:	No
Front Core Thickness:	0.50mm Lead Equivalence (LE)
Back Core Thickness:	0.25mm Lead Equivalence (LE)
Core Material Options:	Lead (ST), Light Lead (LW), Lead-Free (LF), Premier (PR)
Core Material Thickness:	0.50, 0.35, or 0.25 LE
Closure:	Velcro & Buckle
Fabric Options:	Nylon, Ripstop, Designer, Vinyl
Sizes:	XS to 4XL (Sizing Chart on page 31)
Customizations:	Embroidery & Logo
Add-ons:	Thyroid Collar, Sleeve, Surgical Drop

Available Colors: Refer to pages
27-29.

Image Coming Soon

The ultimate in comfort and protection. The wrap-around flexback apron combines the best features of our flexback apron with the full front and back protection of our wrap-around back relief apron. The elastic stretch-back and velcro closures shift the weight from your shoulders to your hips while providing ease of use.

- Maternity Apron -

Full Protection Apron

Standard



Model:	AP-MA
CE Marked:	Yes
Front Core Thickness:	0.50mm Lead Equivalence (LE)
Back Core Thickness:	0.25mm Lead Equivalence (LE)
Core Material Options:	Lead-Free (LF), Premier (PR)
Core Material Thickness:	0.50, 0.35, or 0.25 LE
Closure:	Tie & Buckle
Fabric Options:	Nylon, Ripstop, Designer, Vinyl
Sizes:	XS to 4XL (Sizing Chart on page 31)
Customizations:	Embroidery & Logo
Add-ons:	Thyroid Collar, Sleeve, Surgical Drop

Available Colors: Refer to pages
27-29.



The maternity radiation apron features easy ties and a quick release buckle to secure the back and front panels. This allows complete adjustability during pregnancy. The maternity apron also includes an additional .50mm equivalent half apron for a total of 1.00mm Pb protection over the abdominal area and lower extremities.

- Dental Apron -

Dental Protection

Standard

Available Colors: Refer to pages 27-29.

Image Coming Soon

Model:	AP-DA
CE Marked:	No
Front Core Thickness:	0.25mm Lead Equivalence (LE)
Back Core Thickness:	0.25mm Lead Equivalence (LE)
Core Material Options:	Lead (ST), Light Lead (LW), Lead-Free (LF), Premier (PR)
Core Material Thickness:	0.50, 0.35, or 0.25 LE
Closure:	N/A
Fabric Options:	Nylon, Ripstop, Designer, Vinyl
Sizes:	Adult - 23" W x 26" L Pediatric - 19" W x 21" L
Customizations:	Embroidery & Logo
Add-ons:	Thyroid Collar

Features a non-slip microfiber material that ensures the apron lays in place over the patient. There are no closures.

- Dental Cape -

Dental Protection

Standard

Available Colors: Refer to pages 27-29.

Image Coming Soon

Model:	AP-DC
CE Marked:	No
Front Core Thickness:	0.25mm Lead Equivalence (LE)
Back Core Thickness:	0.25mm Lead Equivalence (LE)
Core Material Options:	Lead (ST), Light Lead (LW), Lead-Free (LF), Premier (PR)
Core Material Thickness:	0.50, 0.35, or 0.25 LE
Closure:	Velcro
Fabric Options:	Nylon, Ripstop, Designer, Vinyl
Sizes:	Standard Size - 23" Wx 25" L
Customizations:	Embroidery & Logo
Add-ons:	Thyroid Collar

Drapes over the front and back of your body during panoramic or standard x-rays. Velcro closure in the back provides an easy-on, easy-off solution.

- Dental Panoramic Poncho -

Dental Protection

Standard

Available Colors: Refer to pages
27-29.

Model:	AP-DP
CE Marked:	No
Front Core Thickness:	0.25mm Lead Equivalence (LE)
Back Core Thickness:	0.25mm Lead Equivalence (LE)
Core Material Options:	Lead (ST), Light Lead (LW), Lead-Free (LF), Premier (PR)
Core Material Thickness:	0.50, 0.35, or 0.25 LE
Closure:	Velcro
Fabric Options:	Nylon, Ripstop, Designer, Vinyl
Sizes:	Adult - 24" W x 27" L Front x 16" L Pediatric - 22" W x 12" L Front x 6" L
Customizations:	Embroidery & Logo
Add-ons:	Thyroid Collar

Image Coming Soon

Drapes over the body to provide front and back protection. Similar to the dental cape but the velcro closure is on the shoulder area. Dental panoramic poncho comes in two sizes.

- Original Thyroid Collar -

Lead Accessories

Thyroid Protection



Available Colors: Refer to pages 27-29.

Model:	AP-TCO
CE Marked:	Yes
Front Core Thickness:	0.50mm Lead Equivalence (LE)
Back Core Thickness:	None
Core Material Options:	Lead (ST), Light Lead (LW), Lead-Free (LF), Premier (PR)
Core Material Thickness:	0.50, 0.35, or 0.25 LE
Closure:	Velcro or Buckle
Fabric Options:	Nylon, Ripstop, Designer, Vinyl
Sizes:	S = 14" M = 15" L = 16" XL = 17"
Customizations:	Embroidery & Logo
Attachments:	Loose, Clip, Keyring, Tethered



The traditional style thyroid collar fits lower on the neck, offering coverage for the thyroid against scatter radiation. Velcro strips on the end allow for neck size adjustability. The thyroid collar has two options for closure in the back; velcro or buckle.
*For disposable options please see our Proguard Patient Protection products.

- Standard Thyroid Collar -

Lead Accessories

Thyroid Protection



Available Colors: Refer to pages 27-29.

Model:	AP-TCS
CE Marked:	Yes
Front Core Thickness:	0.50mm Lead Equivalence (LE)
Back Core Thickness:	None
Core Material Options:	Lead (ST), Light Lead (LW), Lead-Free (LF), Premier (PR)
Core Material Thickness:	0.50, 0.35, or 0.25 LE
Closure:	Velcro or Buckle
Fabric Options:	Nylon, Ripstop, Designer, Vinyl
Sizes:	S = 14" M = 15" L = 16" XL = 17"
Customizations:	Embroidery & Logo
Attachments:	Loose, Clip, Keyring, Tethered



The standard radiation thyroid collar is designed to fit higher along the neck while providing complete coverage of the thyroid against scatter radiation. This style of thyroid is our most popular. The thyroid collar has two options for closure in the back; velcro or buckle.
*For disposable options please see our Proguard Patient Protection products.

- ProGuard Thyroid Collar -

Lead Accessories

Thyroid Protection

Available Colors: Refer to pages 27-29.

Model:	AP-TCG
CE Marked:	No
Protection:	0.50mm Lead Equivalence (LE)
Special:	Front & Back Protection
Core Material Options:	Lead (ST), Light Lead (LW), Lead-Free (LF), Premier (PR)
Core Material Thickness:	0.50, 0.35, or 0.25 LE
Closure:	Velcro
Fabric Options:	Nylon, Ripstop, Designer, Vinyl
Sizes:	S = 21" M = 22" L = 23" XL = 24"
Customizations:	Embroidery & Logo
Attachments:	No



The ProGuard thyroid collar provides front and back protection. It features a form-fitting design with velcro back closure.

- Thyroid Collar Covers -

Lead Accessories

Thyroid Protection

Available Colors: Refer to pages 27-29.

Model:	AP-TCC AP-DTC
CE Marked:	No
Protection:	
Special:	
Core Material Options:	
Core Material Thickness:	
Closure:	
Fabric Options:	
Sizes:	One size fits all
Customizations:	
Attachments:	

Image Coming Soon

Choose between washable (AP-TCC) or disposable thyroid collar covers (AP-TCCD). Thyroid collar covers are designed to prolong the life of your thyroid by keeping them clean!

- Apron Cap -

Lead Accessories

Head Protection



Model:	AP-CAP
CE Marked:	Yes
Protection:	0.50mm Lead Equivalence (LE)
Special:	Top and Side Protection
Core Material Options:	Lead (ST), Light Lead (LW), Lead-Free (LF), Premier (PR)
Core Material Thickness:	0.50, 0.35, or 0.25 LE
Closure:	Velcro
Fabric Options:	Nylon, Ripstop, Designer, Vinyl
Sizes:	S = 21" M = 22" L = 23" XL = 24"
Customizations:	Embroidery & Logo

Available Colors: Refer to pages 27-29.



Similar to a scrub cap, the apron cap provides lead protection against exposure to ionizing radiation. The apron cap is similar to a scrub cap. The adjustable velcro tab allows for a very comfortable fit.

*Sizes based on head circumference.

- Page Cap -

Lead Accessories

Head Protection



Model:	AP-PAGE
CE Marked:	Yes
Protection:	0.50mm Lead Equivalence (LE)
Special:	Side Protection Optional Top Protection
Core Material Options:	Lead (ST), Light Lead (LW), Lead-Free (LF), Premier (PR)
Core Material Thickness:	0.50, 0.35, or 0.25 LE
Closure:	Velcro
Fabric Options:	Nylon, Ripstop, Designer, Vinyl
Sizes:	S = 21" M = 22" L = 23" XL = 24"
Customizations:	Embroidery & Logo

Available Colors: Refer to pages 27-29.



The page cap is a radiation safety accessory designed to provide protection against exposure to scatter radiation. The adjustable velcro tab allows for a comfortable fit. This head protection style is our more popular model.

*Sizes based on head circumference.

- Back Relief Belt -

Apron Accessories

Back Support



Model:	AP-BLT	
CE Marked:	Yes	
Front Core Thickness:	None	
Back Core Thickness:	None	
Closure:	Velcro and Buckle	
Fabric Options:	Nylon, Ripstop, Designer, Vinyl	
Customizations:	Embroidery & Logo	
Waist Measurements:	Female	Male
XS	24-26"	30-33"
S	26-28"	33-36"
M	28-31"	37-40"
L	31-33"	41-44"
XL	34-38"	44-48"

Available Colors: Refer to pages 27-29.



The back relief belt is constructed of neoprene bonded elastic. It features high quality components so that it does not lose elasticity. The belt also features a non-slip adjustable buckle to ensure a secure fit. The back relief belt attaches separately from the apron.

- Corset Belt -

Apron Accessories

Back Support

Model:	AP-CORSET	
CE Marked:	No	
Front Core Thickness:	None	
Back Core Thickness:	None	
Closure:	Velcro	
Customizations:	None	
Waist Measurements:	S = 25-30"	
	M = 30-35"	
	L = 35-40"	
	XL = 40-45"	

Available Colors: Black



Our corset belt is a great apron accessory for added back support when wearing a radiation protection apron. The finger pull tab and pulley system along the spine provides for simple adjustment and even tension.

*The corset belt is worn under the apron.

- Breast Stole -

Lead Accessories

Body Protection



Model:	AP-STOLE
CE Marked:	Yes
Front Core Thickness:	0.50mm Lead Equivalence (LE)
Back Core Thickness:	None
Core Material Options:	Lead (ST), Light Lead (LW), Lead-Free (LF), Premier (PR)
Core Material Thickness:	0.50, 0.35, or 0.25 LE
Closure:	Buckle
Fabric Options:	Nylon, Ripstop, Designer, Vinyl
Customizations:	Embroidery & Logo
Sizes:	Pediatric: 15" x 4.75" Medium: 18.5" x 6.75" Large: 23.5" x 8"

Available Colors: Refer to pages 27-29.



The breast shield is primarily used in spinal imaging. The shield features velcro panels and an adjustable belt for proper positioning. The neck area does not contain lead, allowing complete visibility of the spine during x-ray, while offering protection to the breast area. This shield is great for scoliosis studies.

- Gonad/Ovarian Shield -

Lead Accessories

Body Protection



Model:	AP-GS-OL, AP-GONAD
CE Marked:	Yes
Front Core Thickness:	0.50mm Lead Equivalence (LE)
Back Core Thickness:	None
Core Material Options:	Lead (ST), Light Lead (LW), Lead-Free (LF), Premier (PR)
Core Material Thickness:	0.50, 0.35, or 0.25 LE
Closure:	Buckle
Fabric Options:	Nylon, Ripstop, Designer, Vinyl
Customizations:	Embroidery & Logo
Special:	Available as a set of 3 or individually
Sizes:	Small, Medium, Large Sizes included with set

Available Colors: Refer to pages 27-29.



This unique gonad/ovarian shield belt system comes complete with four interchangeable sizes that fit the end user appropriately. The adjustable buckle also allows the user to fit almost any waist size while providing a comfortable fit. The gonad shield is also available as an individual piece for 1 size fits all (AP-GONAD).

- Half Apron -

Lead Accessories

Body Protection



Model:	AP-HA
CE Marked:	Yes
Front Core Thickness:	0.50mm Lead Equivalence (LE)
Back Core Thickness:	None
Core Material Options:	Lead (ST), Light Lead (LW), Lead-Free (LF), Premier (PR)
Core Material Thickness:	0.50, 0.35, or 0.25 LE
Closure:	Velcro
Fabric Options:	Nylon, Ripstop, Designer, Vinyl
Customizations:	Embroidery & Logo
Sizes:	S = 10" x 10" M = 18" x 16" L = 24" x 20" XL = 24" x 24"

Available Colors: Refer to pages 27-29.



The half apron can provide extra radiation protection. Selling it separate also allows you to mix and match a smaller bottom half with a larger top piece or vice versa.

- Apron Sleeve -

Lead Accessories

Body Protection



Model:	AP-SLV
CE Marked:	Yes
Front Core Thickness:	0.25mm Lead Equivalence (LE)
Back Core Thickness:	None
Core Material Options:	Lead (ST), Light Lead (LW), Lead-Free (LF), Premier (PR)
Core Material Thickness:	0.50, 0.35, or 0.25 LE
Closure:	Sewn-in, Snap-on
Fabric Options:	Nylon, Ripstop, Designer, Vinyl
Customizations:	Embroidery & Logo
Sizes:	Available in Small, Medium, Large, XL or Custom (Based on bicep circumference and sleeve length)

Available Colors: Refer to pages 27-29.

Snap-on



Sewn-in



This optional sleeve is available for all apron styles and protects the upper arm and shoulder from direct beam and scatter radiation. It can be attached as a snap on or directly sewn on.

- Shin Guards -

Lead Accessories

Body Protection 

Model:	AP-SG
CE Marked:	Yes
Front Core Thickness:	0.50mm Lead Equivalence (LE)
Back Core Thickness:	None
Core Material Options:	Lead (ST), Light Lead (LW), Lead-Free (LF), Premier (PR)
Core Material Thickness:	0.50, 0.35, or 0.25 LE
Closure:	Velcro
Fabric Options:	Nylon, Ripstop, Designer, Vinyl
Customizations:	Embroidery & Logo
Sizes:	S = 13" x 9" M = 14" x 10" L = 16" x 12" XL = 18" x 14"

Available Colors: Refer to pages 27-29.



When being exposed to ionizing radiation, all forms of radiation protection are necessary. Optional feet protector extensions may be added.

- Apron Duffle Bag -

Apron Accessories

Transportation

Model:	AP-DUFFLE
CE Marked:	No
Closure:	Zipper
Special:	Shoulder Strap 10" Velcro Opening Carrying Handle Lengthens Apron Life
Fabric Options:	Nylon, Ripstop, Designer, Vinyl
Customizations:	Embroidery & Logo

Available Colors: Refer to pages 27-29.



Our duffle bag protects your aprons while traveling to trade shows, or out of the country. Protect and store your aprons for transport now with our affordable, quality, duffle bag.

FABRIC COLORS

NYLON



Black



Burgundy



Forest Green



Gray



Green



Hot Pink



Light Royal



Navy



Neon Green



Orange



Purple



Red



Rose



Royal



Tan



Teal



Yellow

RIPSTOP



Black



Brown



Burgundy



Chocolate



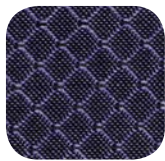
Forest



Green



Navy



Purple



Red



Royal Blue



Silver

WIPE-AWAY VINYL



Black



Silver



Red



Burgundy Galaxy



Royal Blue Galaxy



Red Galaxy



Black and Silver Sparkle

EXTRA
STRENGTH

FABRIC COLORS

PRINT



70's Flowers



Brown Animal Spots



Blue Animal River



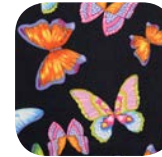
Blue Plaid



Blue Flame



Brown Camo



Butterfly



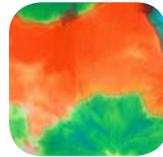
Cosmo



Gray Flowers



Green Camo



Green Neon Tie-Dye



Green Plaid



Hawaiian



Jungle Dream



Leopard Print



Lu Lu Grape



Magenta Flowers



Paw Prints



Pink Camo



Purple Neon Tie-Dye



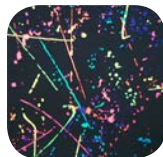
Red Dalmation



Sheep



Snake Skin



Paint Splash



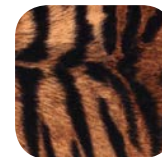
Sports



Surf Wax



Teal Splash



Tiger



Tropic Watercolors



Yellow Camo



Zebra



Argyle Green



Asian Garden - Pink/Blue



Crayon Hearts



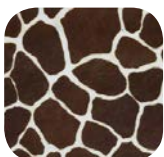
Digital Camo - Grey



Galaxy - Black Multi



Galaxy - Royal, Black



Giraffe - Brown



Mystery - Multi



Rhapsody - Blue/Turq.



Small Camo - Blues



Small Camo - Pinks/Mauves



Star Gazer



Sunrise

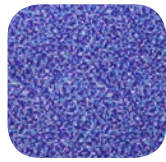
EXTENDED LIST



Animal Farm - Blue



Carbon Fiber



Chicklets Blue



Circles



Dog Paw



Fire Tongues



Fruity Pebbles



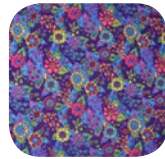
Hawaii Postcard



Mamba - Blue



Mamba - Pink



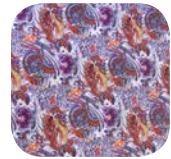
Mardi Gras



New Plaid - Light Pink



New Plaid - Purple



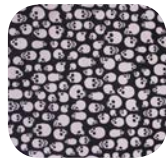
Painted Dragon



Plaid - Teal



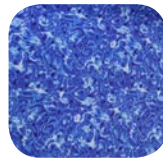
Rainbow



Skulls - Gray



Skulls - Red



Marble Splash



Stars

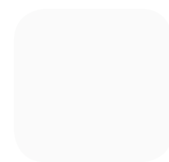


Steel

ANTI-MICROBIAL POLYS*



Featuring stain resistant and anti-microbial technology only available from Protech Medical. Our poly material will resist a wide variety of bacteria and is backed by the FDA. Available in matte black and matte white.



White



Matte Black

COMMON MEASUREMENTS

Chest Measurement



Measure around the largest circumference of the bust area, keeping the tape parallel to the floor with the client's arms at their sides.

Waist Measurement



Measure around the smallest circumference of the torso. If you measure at waist level it may be inaccurate.

Hip Measurement



Measure around the largest circumference of the hips and buttocks with the tape parallel to the floor: generally 8-9 inches down from the waist.

Front Apron Length Measurement



Measure from the top of the shoulder over the bust to the desired length. Do not contour the tape measure in under the bust.

Vest Length Measurement



Measure from the top of the shoulder over the bust to the desired length. Do not contour the tape measure under the bust.

Skirt Length Measurement



Measure from the top of the pant line (waist) and over the outside of the hip down to the desired length.

SIZE CHARTS

MALE

	XS	Small	Med	Large	XL	2X	3X
Height	5'2"	5'4"	5'8"	5'11"	6'2"+		
Chest	39"	42"	45"	48"	53"	57"	60"
Waist	32	34	38	42	46	50	54
Hips	34	36	40	44	48	52	56
Front Length	34	34	37	40.5	42.5	42.5	45.5
Front Width	19	21	22	24	26	28	30
Vest Length	22	22	24	25	25	25	28
Skirt Length	20	20	20	21	21	22	22
WABR Length	36	36	38	40.5	42.5	42.5	45.5

FEMALE

	XS	Small	Med	Large	XL	2X	3X
Height	5'1"	5'2"	5'5"	5'8"	5'10"	5'11"	
Chest	36"	38"	40"	43"	46"	49"	52"
Waist	25	27	29	32	35	40	44
Hips	35	37	39	42	46	48	52
Front Length	33	34	36	38.5	40.5	42.5	42.5
Front Width	18	19	20	21	23	24	26
Vest Length	19	22	22	22	22	23	23
Skirt Length	20	20	22	22.5	22.5	22.5	24
WABR Length	33	34	37	40.5	42.5	42.5	44.5

- Mighty Max Rack -

Apron Storage

Mobile

Model: AP-MAX-MOB
Storage Capacity: 10 Aprons
Dimensions: 25" W x 28" L x 48" H



The Mighty-Max mobile apron rack's solid steel design holds up to ten aprons. The pedestal base features rolling wheels for easy portability. Convenience hooks on each hanger can hold lead skirts.

- Porta Rack -

Apron Storage

Mobile

Model: AP-PORTRK
Storage Capacity: 8 Aprons
Special: Available w/ Glove Rack
(AP-PORTARK-WGL)
Glove Capacity: 8 Heavy Duty Gloves



Ideal for use in the O.R., Specials, and Cath Labs, this portable apron storage unit is great quality and affordable. The 24" wheel base with double casters allows this completely loaded rack to glide smoothly while being moved. The porta rack features moving hanger arms that swing forward and backwards for easy apron selection as well as an optional glove rack on the top for maximum storage capabilities.

- Valet Rack -

Apron Storage

Mobile

Model: AP-VALET
Storage Capacity: 15 Aprons



Industrial quality steel construction and easy roll casters make this mobile apron rack an excellent portable storage option. The rack sets itself apart from other apron storage units by providing storage capacity for 15 aprons!

*Includes 4 screws for quick assembly

- Peg Rack -

Apron Storage

Wall Mount

Model:	AP-PEG-2	PEG-4	PEG-8	PEG-14	PEG-18
# of Pegs:	2	4	8	14	18
Apron Capacity:	1	2	4	7	9
Dimensions:	5x3"	10x3"	20x3"	35x3"	45x3"



The apron Peg rack is made of steel construction with a white finish and easily screws into wall studs. It can store up to 9 aprons but comes in a variety of sizes that accommodate the storage of 1, 2, 4, 7, or 9 lead aprons, respectively. This affordable wall storage for lead and non-lead aprons is essential to prolong the life of your radiation aprons.

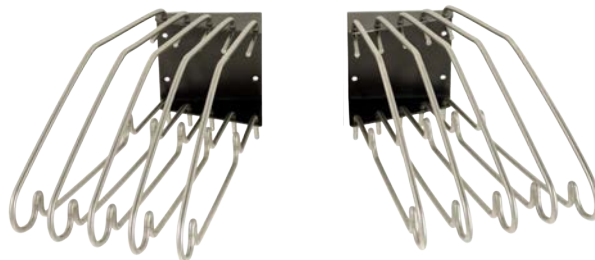
*Mounting hardware is not included.

- Wall Rack -

Apron Storage

Wall Mount

Model:	AP-WALL-(L/R)
Storage Capacity:	5 Aprons per console
Total Capacity:	10 Aprons



Prolong the life of your radiation protective garment with our apron wall rack console. Each console holds up to 5 radiation aprons with the combined left and right consoles storing up to 10 aprons. The wall console features hooks on the bottom of the hangers for lead skirts.

*Does not include mounting hardware.

- Apron Hanger -

Apron Storage

Miscellaneous

Model:	AP-HANGER
Special:	Holds up to 40 pounds



Constructed out of aluminum for durability and longevity this apron hanger is used for the proper storage of radiation protection aprons. It features hook style ends that are designed to hold lead skirts.