

GE Healthcare

Venue 40 for Anesthesia

Once you use it, it's hard to
imagine ever working without it.

Have you tried the simple, yet sophisticated Venue* 40?



an innovation of
healthymagination



imagination at work



Low Sciatic Nerve Block



Axillary Nerve



Lumbar Spine Sagittal



Ease of Use



Cleanability

Venue 40 Anesthesia:

Now you can have precision and exceptional image quality in an intuitive and affordable system.

Easy to use. Just gel and go.

- Intuitive touch interface for easy operation.
- Quick touch commands for depth, gain, freeze and store.
- Pre-configured anesthesia settings for nerve blocks and vascular access.
- Quick boot up—ready to scan in seconds.
- Sleek and portable—fits easily into tight spaces.
- Onboard anesthesia annotation library—plus build your own.

Exceptional image quality. Needle and anatomy clarity.

- B-Steer + Needle Recognition portrays the needle and tip accurately within the anatomy at various angles and depths, without blooming or distortion.
- Power Doppler Imaging (PDI) is highly sensitive to precisely color even small vessels within your pathway.
- CrossXBeam* and Speckle Reduction Imaging (SRI) help to deliver crisp details and borders of nerves, vessels and anatomy.
- Dual beamformer technology provides fast, high-resolution imaging in real-time.
- Processing power enables you to use PDI or Color modes, while maintaining gray scale image quality.

Cleanability, speed and convenience for the surgical environment.

- Single-surface, splash resistant screen—no seams or buttons for bacteria to hide.
- Easily sanitize and clean with medical grade disinfectants.
- Transducer connector is flush with surface to help further reduce areas for contaminants.

Special accessories enhance your Venue 40 experience.

- Storage trays for cart to keep needle kits and supplies within reach.
- Needle guides for the 12L-SC transducer help to maintain needle angle for in- and out-of-plane approaches. Easy to snap on/off the probe.
- Foot switch provides hand-free operation of programmable functions.
- Trophon EPR** from Nanosonics is a high-level disinfection technology that uses vaporized hydrogen peroxide to help ensure a thorough environmentally friendly disinfection in just seven minutes.

Transducers for a broad spectrum of procedures.

Venue 40 provides multiple, ergonomically designed transducer options that help enable you to perform deep or superficial nerve blocks and injections, vascular access, or perioperative cardiac assessment—all on one system. Imagine the possibilities.



12L-SC

Linear array for performing vascular access and superficial needle-guided nerve blocks or injections.



4C-SC

Convex array for imaging deep anatomical targets or larger patients.



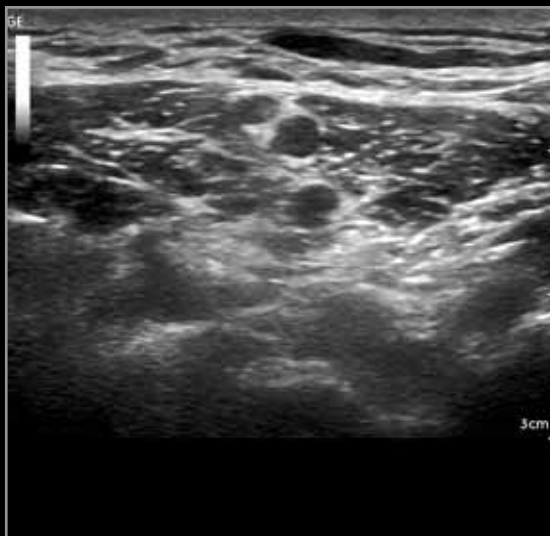
L8-18i-SC

High-resolution, small linear array for superficial and pediatric imaging. Fits areas with bony processes and small anatomy.



3S-SC

Phased array for perioperative cardiac (trans-thoracic) assessment.



Supraclavicular view of the Brachial Plexus.



B-Steer + Needle Recognition accurately portrays the needle and tip within the anatomy, without distortion of the needle.



Save images to SD Card or USB drive.



Connectivity: wireless or wired.

**Flexible data management and connectivity.
Save. Transfer. Report. Print. It's that easy.**

- Multiple formats—JPG, MP4 (one-minute cine loop capability).
- Optional DICOM** for image storage to PACS and worklist.
- Network connection can be wired, or optional wireless.
- Store to a shared folder across the network for attachment to EMR.
- Simply save images to SD Card or USB drive for easy archiving.
- DVI port to display your screen on an external monitor.
- Optional black and white printer connects via USB from cart.

Support so you can maximize the possibilities.

GE can connect you to training programs and local field service support, including Live Assist and a wide range of accessories and supplies. Contact us to learn more or to schedule a demonstration.

GE Healthcare
9900 Innovation Drive
Wauwatosa, WI 53226
U.S.A.
888 526 5144
www.gehealthcare.com

©2012 General Electric Company - All rights reserved.

General Electric Company reserves the right to make changes in specifications and features shown herein, or discontinue the product described at any time without notice or obligation. Contact your GE Representative for the most current information.

GE, GE Monogram are trademarks of General Electric company.

*Trademark of General Electric company.

**All third party trademarks are the property of their respective owners.

GE Medical Systems Ultrasound and Primary Care Diagnostics, LLC, a General Electric company, doing business as GE Healthcare

About healthymagination
GE's "healthymagination" is about better health for more people. For more information about healthymagination, visit www.ge.com/healthymagination.

ULT-0540-07.12-EN-US
DOC1192291

